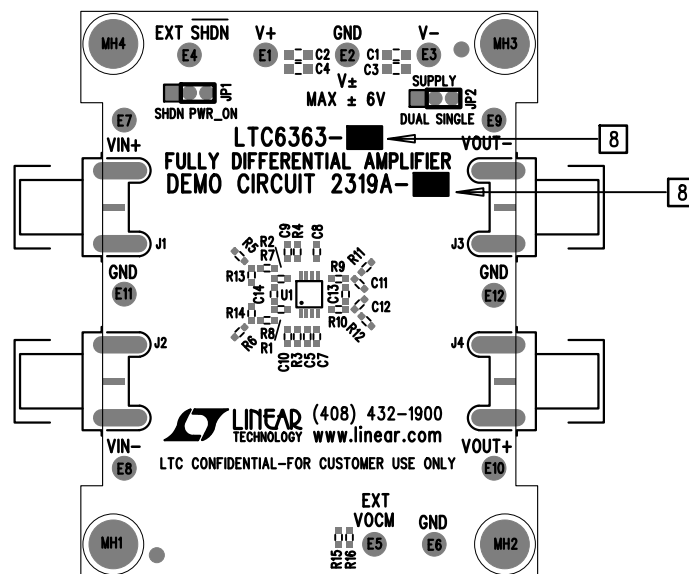
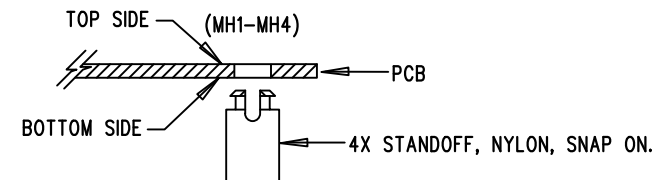


REVISION HISTORY				
ECO	REV	DESCRIPTION	APPR	DATE
-	1	PRODUCTION FAB	KL	4-29-15



NOTES: UNLESS OTHERWISE SPECIFIED

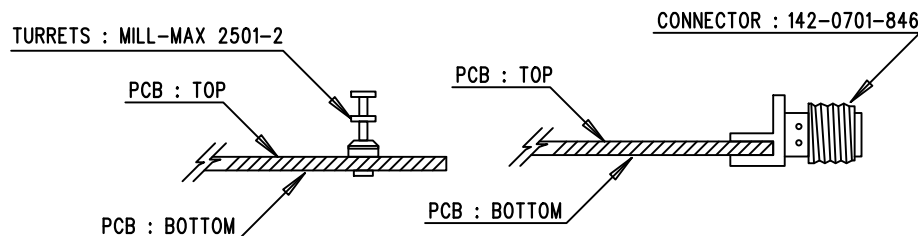
1. WORKMANSHIP SHALL BE IN ACCORDANCE WITH IPC-A-610.
2. ASSEMBLY REFLOW PROFILE SHALL BE IN ACCORDANCE WITH J-STD-020 WITH MAXIMUM SOLDER TEMPERATURE OF 250 DEGREES CELSIUS.
3. PARTS TO OMIT WILL BE SPECIFIED ON THE BILL OF MATERIALS. LOCATIONS OF OMITTED PARTS SHALL BE FREE OF SOLDER. MASK THE SOLDER STENCIL WHERE SMT PARTS ARE OMITTED.
4. INSTALL SHUNTS AS SHOWN ON ASSY DRAWING.
5. DEPANELIZE BOARDS AFTER ASSEMBLY AND ROUTE-OUT THE BREAKOUT TABS ON FOUR SIDES OF THE BOARD EDGE.
6. DO NOT APPLY ANY KIND OF ASSEMBLY STAMP OR QA STAMP TO ANY BOARD.
7. INSTALL 4 STANDOFFS AT 4 LOCATIONS AS SHOWN BELOW:




8. MARK EACH ASSEMBLY TYPE WITH BLACK PERMANENT MARKER AS SHOWN IN TABLE BELOW:

*

ASSY	U1	R1,R2	R3,R4
-A	LTC6363CMS8	1K	1K
-B	LTC6363CMS8-1	0 Ohms	OPT
-C	LTC6363CMS8-2	0 Ohms	OPT
-D	LTC6363CMS8-05	0 Ohms	OPT



APPROVALS		 1630 MCCARTHY BLVD MILPITAS, CA 95035 PH: (408)432-1900 www.linear.com LTC CONFIDENTIAL - FOR CUSTOMER USE ONLY	
PCB DES. NC	APP ENG. KL		
		TITLE: TOP ASSEMBLY DRAWING:	
		FULLY DIFFERENTIAL AMPLIFIER	
		SIZE N/A	REV. 1
		IC NO. LTC6363CMS8	
		DEMO CIRCUIT 2319A-A/D	
SCALE = NONE		FILENAME: DC2319A-1.PCB	SHT 1 of 2